

EVİÇ ŞARKI

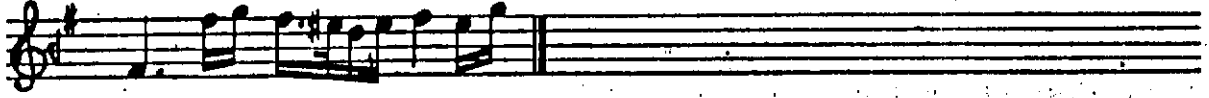
AKSAK

$\text{♩} = 110$

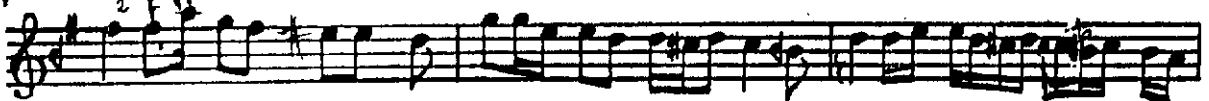
Dr. İrfan DOĞRUSÖZ



ARANAĞME



Ça lal ça — ma — kurşun at — tim — geç — me di — saz —



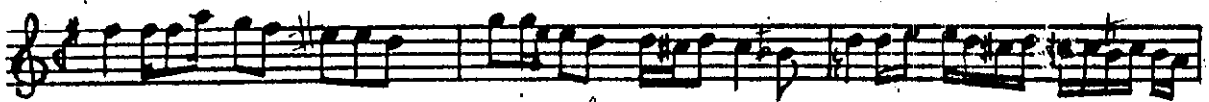
--- naz lı ya — re — ay ran — ver — dim — iç me — di — Bre Bre a



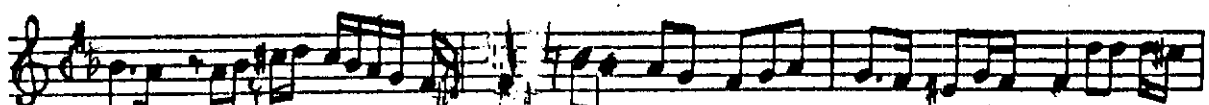
man naz lı ya — re — ay ran — ver — dim — iç — me di — saz —



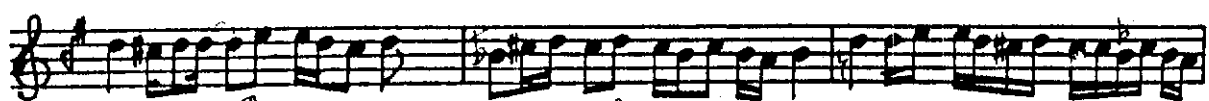
--- Çok yal var — dim — o yâr be — ni — seç — me di — saz —



--- Hanı de be — nim — şu ki na lı — kek li — ğim — bre-bre-a —



man — gece se ni — ne re — le — bek — le yim — saz —



--- ha nı de be — nim — şu ki na lı — kek li — ğim — bre-bre-a —



man — gece se — ni — ne re — le — bek — le yim —

mithat

1. ÇATAL ÇAMA KURŞUN ATTIM GEÇMEDİ
NAZLI YÂRE AYRAN VERDİM İÇMEDİ
ÇOK YALVARDIM O'YAR BENİ SEÇMEDİ

2. KARLI DAĞIN DUMANINI YEL ALIR
YAĞAR YAĞMUR DAĞI TAŞI SEL ALIR
BEN SEVERİM NAZLI YÂRİ EL ALIR

Nakarat)

HANİ DE BENİM ŞU KINALI KEKLİM
GECE SENİ NERELERDE BEKLEYİM